

Bièvre Liers Valloire

River development and management plan

Quantitative and qualitative survey of the aquifer



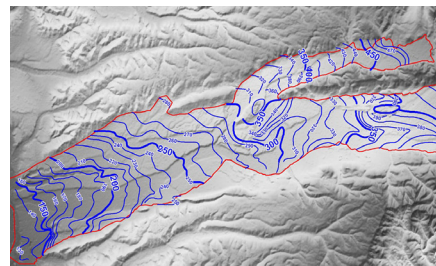
Country
France

Client
Syndicat Intercommunal
d'Aménagement
Hydraulique de Bièvre Liers
Valloire

Date
2007-2008

Sogreah's services

- ▶ Quantitative and qualitative survey
- ▶ Assessment of groundwater quality
- ▶ Recommendations in terms of resource management



Context

The Bièvre Liers Valloire development and management plan was launched in 2002. The main challenges are on the one hand to set up comprehensive and coordinated management in order to improve quantitative management of the resources and on the other to combat pollution in order to restore the quality of the water.

Aims

The main aim of the study is to characterise the current state of the aquifer, which is under considerable stress, in order to

establish pragmatic management rules by focussing on:

- improving knowledge of the way the aquifer functions and updating the piezometric map,
- defining the spatial distribution of groundwater pollution, especially by nitrates, pesticides and chlorinated solvents.

This information was used as a basis for putting forward recommendations concerning the management of the aquifer.

Performance of the study

- Analysis and summary of the numerous existing documents (on piezometry, abstraction,

water quality, etc.).

- Selection of sampling points on the basis of a multicriterion analysis.
- Sampling campaign, covering about 150 points, including water analysis in the laboratory.
- Measurements of piezometric levels, surveying of water points and mapping of aquifer piezometry.
- Survey among local authorities concerning the application of phytosanitary products.
- Ranked proposals concerning quantitative and qualitative management of the aquifer.

1741161/GNB/SLS/ebd/0908